

Fried Liver Attack

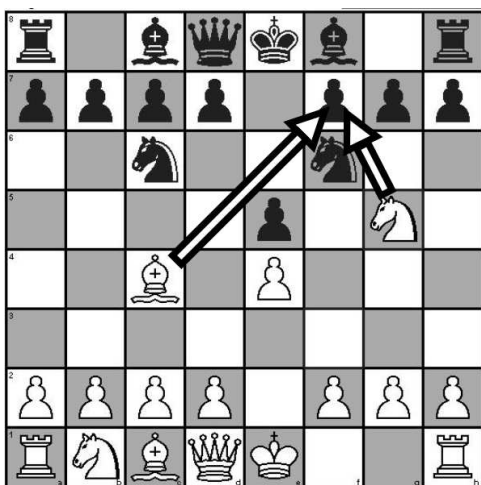
Pratt - Wolford, 1976

http://www.johnpratt.com/items/chess/fried_liver.html

This game illustrates the terrific trouble black can encounter if he doesn't defend accurately against the *Fried Liver Attack*!

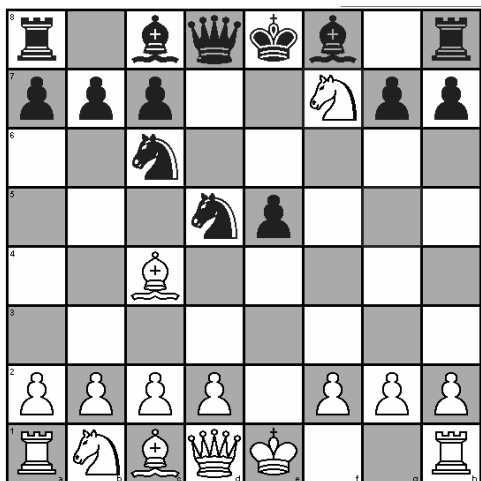
The attack:

1. e4 e5 2. Nf3 Nc6 3. Bc4 Nf6 4. Ng5!



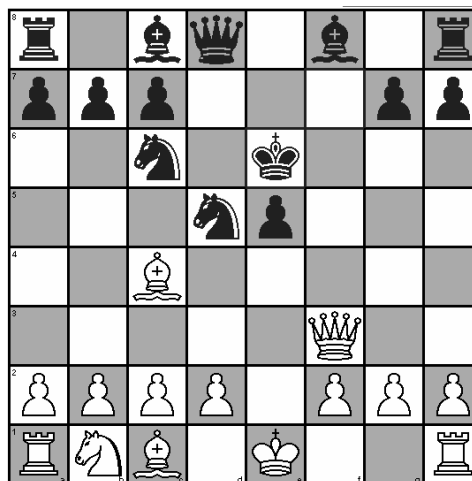
By moving the Knight to f6, black has cut off the Queen's defense of the g5 square. Now white is free to move his Knight there, setting up a double attack on the f7 square.

4. ... d5 blocks the Bishop's attack
5. exd5 Nxd5? recovers the pawn, but
6. Nxf7! white takes on f7 anyway!

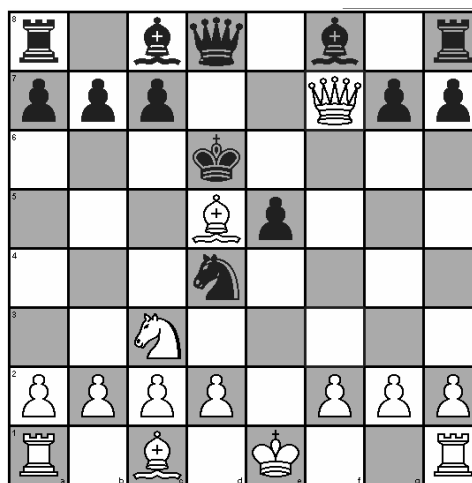


White forks the black queen on d8 and the black king on e8.

6. ... Kxf7 black must recapture or lose the h8 rook. 7. Qf3+ Ke6 e6 is the only square that saves black's d5 knight. Does the black king look safe to you?



8. Nc3 attacks the pinned d5 knight
8. ... Nd4?? Does not defend the knight!
Perhaps black thought the fork on the queen and the c2 square would foil the attack
9. Bxd5+ Kd6 10. Qf7!



Black has the move, but he's in serious trouble: there's a mate-in-one on the board for white, can you find it? White concludes the game by hunting black's exposed king --
10. ... Kc5 11. Na4+ Kb5 12. Nc3+ Ka5
13. b4+ Kxb4 14. Rb1+ Kc5 15. Ba3#